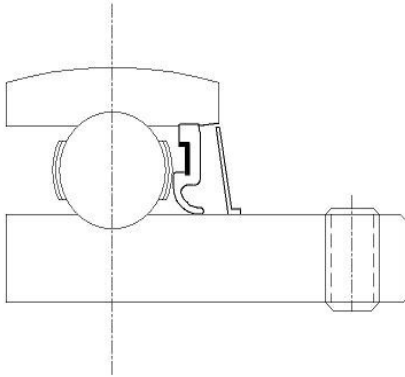




## Sealing Devices

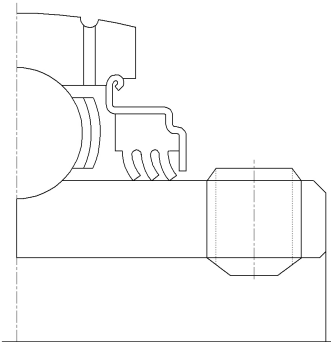
There are a variety of sealing devices that are available on different bearings for different applications. By selecting the proper sealing device, the bearing working life could be substantially increased.

### SR-Type sealing device (Applicable bearing: UC, NA, ER and UG types):



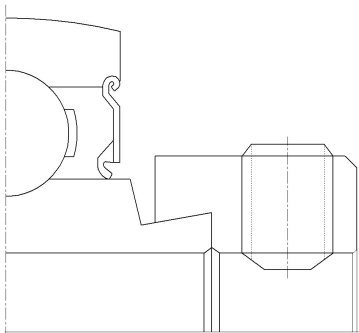
This is our standard sealing device on **KBZ Brand** wide inner ring bearings. The seal is fixed in a groove in the ID of the outer ring, while the slinger is set on the inner ring's OD. The simultaneous revolution with the inner ring generates the pressure needed for its dust-proof properties. This constitutes the ideal labyrinth.

### L III Type sealing device (Applicable bearing: UC and NA types):



The metal cap and synthetic rubber seal are fused together to form a single seal. The seal lip has sufficient tightening allowance and as the lip layers are of triple lip construction, foreign matters such as dust, water, etc. are completely shut out. The sealing system shows its outstanding performance under such severe ambient conditions as dust, dirty water, gas and chemicals

### A-Type sealing device (Applicable bearing: SA/CSA and SB/CSB types):



Special Nitril Buna-N rubber, noted for excellent shape retention and wear-resistance, is fused to the inside of a steel shield and is seated in the ID of the outer ring of the bearing. This flared sealing lip contacts the OD of the inner ring producing a positive friction seal against entrance of contaminants and is effective in grease retention. The thick steel shield protects the rubber seal against mechanical damage. This combined effect of seal contact and seal protection ensures long service life even under unfavorable conditions.

(continued)

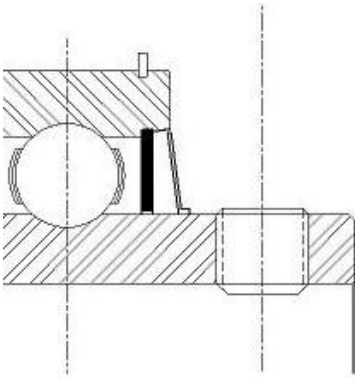


## Sealing Devices

There are a variety of sealing devices that are available on different bearings for different applications. By selecting the proper sealing device, the bearing working life could be substantially increased.

(continued)

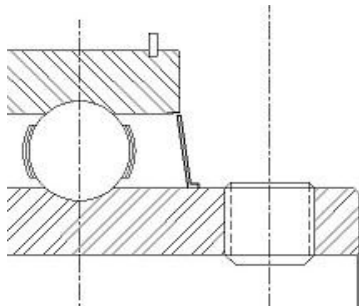
### **K3 & K4-Type sealing device** (Applicable bearing: ER types, *low & super-low drag* bearings):



These sealing devices are designed to prevent entry of contaminants while providing "free running" operation by greatly reducing internal friction. It consists of a non-contact inner seal and is protected by a heavy gauge non-contact metal shield, called a slinger. The seal is fixed in a groove in the ID of the outer ring, while the slinger is set on the inner ring's OD.

- Bearings sealed with **K3-type** seals are factory lubricated with a 10% fill of low friction grease.
- Bearings sealed with **K4-type** seals are factory lubricated with oil and are free of grease to further reduce internal friction and provide *super-low-drag* operation.

### **P4-Type sealing device** (Applicable bearing: ER type, *super-low drag* bearings):



This sealing system is designed to prevent entry of contaminants while providing an "extremely free running" operation by greatly reducing internal friction. It consists of a heavy gauge non-contact metal shield, called a slinger. The slinger is set on the inner ring's OD and rotates with the shaft.

- Bearings sealed with **P4-type** seals are factory lubricated with oil and are free of grease to further reduce internal friction and provide *super-low-drag* operation.